



KANAGAWA PHILHARMONIC ORCHESTRA  
**ANNUAL REPORT**

2024



## Message From Chairman



Public Interest Incorporated  
Foundation  
Kanagawa Philharmonic Orchestra  
Chairman:

Takashi Ueno

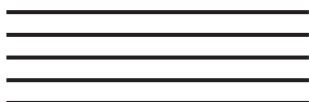
We would like to express our sincere gratitude to all of you for your continued support to Kanagawa Philharmonic Orchestra.

The orchestra was founded in 1970 and continues to operate as the only professional orchestra based in Kanagawa Prefecture, which celebrates its 54th year this term. With the philosophy of "creating the music culture that is closely tied to the community," we hold three main series concerts including regular concerts, and besides touring concerts held in the prefecture and neighboring ones and concerts such as semi-stage operas, as well as music appreciation events for children, school visit concerts, and volunteer visiting concerts at welfare facilities and medical institutions.

Fortunately, FY2024 was a very fulfilling year in which we were able to have more audience than ever before, and in addition to Music Director Ryusuke Numajiri, who is in his third term with us, we were able to invite a variety of guests from Japan and abroad to hold concerts with their own tastes. In addition to classical masterpieces, we could offer a variety of performances, including large orchestration with choirs and soloists, and world premieres of works commissioned by us. In addition, as a rare attempt for an orchestra, the orchestra planned, produced, and aired a TV publicity program on its own. It was a casual and relaxed content and we think it was a good opportunity for more people to get to know our orchestra.

We hope to be an orchestra that can reach as many people as possible, while maintaining the top-class music quality. Our various activities are made possible by the support of many people. We would like to express our sincere gratitude to everyone who has supported us, and to continue to deliver even more wonderful music in the future. We look forward to your continued support to our orchestra.

## Mission



To create the music culture that is closely tied to the community

- 1 As an orchestra, we always aim to create a higher musical culture.  
[Outstanding Excellence]
- 2 As an orchestra supported by the local communities, we deliver a variety of music to as many people as possible in close contact with the communities.  
[For Communities]
- 3 As a member of society, we will share music with all people and contribute to solve social issues.  
[With Everyone]

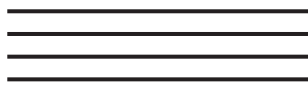


Music Director Ryusuke Numajiri





## Kanagawa Philharmonic Orchestra



### Profile

We were founded in 1970 as the only professional orchestra based in Kanagawa Prefecture. With the mission of creating the music culture that is closely tied to the local community, it continues to carry out a wide range of activities throughout Kanagawa Prefecture and other parts of the country. It was certified as a general incorporated foundation in 1978 and as a public interest incorporated foundation in 2014.

Wide range of performances are held, including regular concerts and special concerts centered in Yokohama and Kawasaki, as well as touring performances around the prefecture. It is also active in music education, holding music appreciation classes at elementary and junior high schools all over the country to convey the appeal of music to various generations, and actively performing at medical institutions and special needs schools. It received the 1983 Ando Tametsugu Education Memorial Foundation Commemorative Award, the 1989 Kanagawa Culture Prize, the 2007 NHK Regional Broadcasting Culture Award, the Yokohama Culture Award, and the 2022 Regional Cultural Merit Award.

In 2020, the orchestra celebrated its 50th anniversary, and its conductors currently includes Ryusuke Numajiri as music director, Shigeo Genda as honorary conductor, and Kazuhiro Koizumi as a special guest conductor.

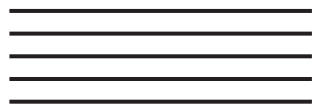
### History

1970	March:	Established as "Laurier Orchestra" by young musicians in the prefecture
1971	October:	Changed name to Kanagawa Philharmonic Orchestra
1978	July :	Approved as a general incorporated foundation
1983	December :	Received the Ando Tametsugu Education Memorial Foundation Commemorative Award
1989	November :	Winner of the 38th Kanagawa Culture Prize
2007	March :	NHK Regional Broadcasting Culture Award
	November :	Yokohama Culture Prize
2011	February:	Kanagawa Philharmony Support Organization was created and Blue- Dal Fund was launched
2014	April :	Approved as a public interest incorporated foundation
	June:	Blue-Dal Supporters Organization was established
2015	April:	Designated as the management body of Kanagawa Art Hall
2022	November :	"Regional Cultural Merit Commendation" Received





## Our own concerts



### Minato Mirai Series

.....10 concerts

Conveying the essence of classical music and cutting-edge trends

Kanagawa Philharmonic's  
"Listening to the Now" Series

The direction of the performances was decided in consultation with Music Director Numajiri and Special Visiting Conductor Koizumi, and guest conductors and soloists were selected on recommendation or advices from Music Director Numajiri.

394th~403rd

Venue: Yokohama Minato Mirai Hall



July 20, 2024  
Minato Mirai Series #397

### Ongaku-Do series (Music Hall series) 「Classic Modern」.....3 concerts

"From old and timeless masterpieces, I feel 'new'" A series that delivers a unique and innovative programs

In addition to Western composers, we have created future focused and always stimulating contents, such as Japanese composers' works by Toru Takemitsu and Akira Miyoshi, and commissioning a new work to pianist Tomoki Sakata.

29th~31st

Venue: Kanagawa Prefectural Music Hall



July 6, 2024  
Ongaku-Do Series #30

### Visiting-your-town Series

.....5 concerts

A series of live performances by the Kanagawa Philharmonic in all of Kanagawa Prefecture and neighbors  
For Tokyo performances, on March 16 and 23, NHK-FM "Bravo! Orchestra".

Venue: Minami-Ashigara, Yokohama, Kawasaki, Tokyo, Atsugi



February 28, 2025  
Visiting-your-town Series Tokyo

### Dramatic Series.....1 concert

Created with opera conductor  
Numajiri Music Director,

A series of concert-style operas

On April 7th, the 100th anniversary of the birth of the Kanagawa Philharmonic's artistic advisor Laureate, composer Ikuma Dan, we performed his opera "Yuzuru". It was also a great pleasure to be performed at the Yokosuka Arts Theater, which is Mr. Dan's hometown.



April 7, 2024  
Dramatic Series Opera "YUZURU"



---

## Timeless Masterpiece Series

……3 concerts

A series that conveys the charm of live orchestral music through a wide range of music genres

On March 22, 2025, As the commemoration of closure of Kanagawa Kenmin Hall, at the end of this fiscal year, we performed musical show music concert.



March 22, 2025  
Timeless Masterpiece Series #22

20th~22nd

Venue: Kanagawa Kenmin Hall

---

## Special Concerts

A total of 5 concerts to be held to expand the future of music culture in Kanagawa Prefecture

The "Yokohama Next Concert" was held, in which the orchestra was performed with students in Yokohama City.

- ◎ Chamber music series by the Kanagawa Philharmonic virtuoso
- ◎ Yokohama Next Concert 2024 meets Tsuzuki Ward
- ◎ The 19th Fresh Concert
- ◎ Via Mare Concert
- ◎ Kanagawa Philharmonic Charity Concert



September 23, 2024  
Yokohama Next Concert

---

## School Visit Concert

……26 times in total

Social contribution projects a "community orchestra" rooted in the community

We performed at special needs schools and medical facilities in Kanagawa Prefecture.



April 25, 2024 School Concerts  
Kitatsunashima School  
for Special Needs Education

---

## Others

A total of 14 times, including video recording for publicity, One-off-event, and collaborative projects with governments and associations.

- ◎ Kana Phil Feeeel (aired on TV Kanagawa)
- ◎ Art Caravan Shizuoka Performance
- ◎ Thank You Concert (to subscription members and donors)
- ◎ Kawasaki Jazz in Azalea and others



October 21, 2024  
Kawasaki Jazz



## Music Education

We provide children, who will lead the next generation, with opportunities to experience authentic orchestral performances with the aim of fostering rich emotions and sensibilities.

### Outreach type.....Total 16 sessions

As an initiative to convey the charm of music through musical exchange between members of the orchestra and children, and to have more fans in the next generation of the Kanagawa Philharmonic, we develop concerts that allow children to experience music with their five senses, through music instruction workshops and body percussion, at elementary school level.



January 21, 2025 Dream Concert  
Isehara City Takabeya Elementary School

### Children's Music Art Experience Project "Dream Concert"

Organizer: Kanagawa Philharmonic

Co-organizer: Kanagawa local government

### Kanagawa Philharmonic Orchestra Factory

Organizer: Kanagawa Philharmonic

### Comprehensive Program for Nurturing Children through Culture and the Arts "Dream Concert"

Organizer: Agency for Cultural Affairs



September 11, 2024  
Tsunashigashi Elementary School,  
Awaji, Hyogo

### Concerts.....Total 53 sessions

This is a concert organized by the government and schools of each municipality.

Children gather in the concert hall to appreciate to music.

Isehara City, Ebina City, Kanagawa Prefecture, Sagami City, Yokosuka City, Yokohama City, Shinagawa Ward, Private Schools,



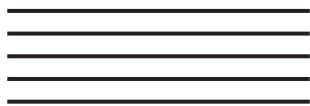
September 2024  
For primary school student concert  
Yokohama,

**Number of children who listened to the Kanagawa Philharmonic this year**  
[Total Outreach and Concerts]

Approximately **53,000**



## Commissioned performance



These are the concerts held by private companies, theaters, promoters, and the local and central governments. In addition, there are opera and ballet performances, recording and recording for broadcast, and traveling performances by small ensembles.

## 39 general performances



December 22, 2024  
Crown Classical Concert #42



March 31, 2025  
Thank you Kanagawa  
Prefectural Hall Finale Concert

## 5 performances for young people



May 5, 2024  
Children's Day Concert



December 7, 2024  
Kanagawa Prefecture Child-  
Rearing WAKU-WAKU Concert

## 1 opera and ballet performance



September 6, 2024  
Opera Princess Anio

## Broadcast / Recording 1 time

### TV Asahi Network "Untitled Concert"

Aired on June 22, 2024

"Classical Concert Born  
from Fairy Tales"

Aired on July 6, 2024

"It's hated, but it's very  
popular! Bruckner's  
Concert"

## Small ensembles (chamber music) 37 performances



July 14, 2024 Yokohama F. Marinos  
(Professional Soccer Team)  
Anthem Performance

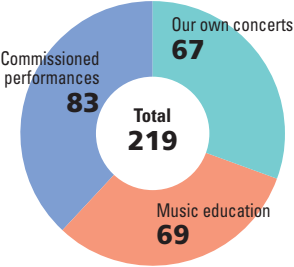


September 12, 2024  
Kanagawa Automobile Dealers Association  
70th Anniversary Ceremony

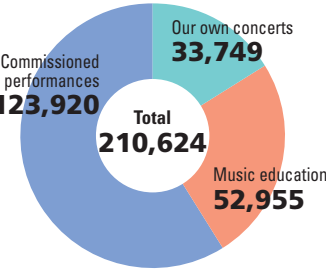


# Activity Report

Number of performances



Number of Visitors



## Number of performances

Our own concerts	
Regular concerts	22
Minato Mirai Series	10
Ongaku-Do series	3
Visiting-your-town series	5
Dramatic series	1
Timeless Masterpiece Series	3
Special Concert	5
School Visit Concert	26
Other independent performances	14

## Music Education

Organized by Kanagawa Philharmonic	6
Organized by the Agency for Cultural Affairs	10
Large-scale events organized by local governments and schools	31
Small-scale events organized by local governments and schools	22

## Commissioned performance

General public audience	39
Youth Level	5
Opera & Ballet	1
Broadcast & Recording	1
Ensemble	37

## Number of Visitors

Category	Number of performances	Number of visitors
Our own concerts	67	33,749
Music education	69	52,955
Commissioned performance	83	123,920
<b>Total</b>	<b>219</b>	<b>210,624</b>

\* The number of performances and the number of visitors shown above includes performances at stadiums and ballparks by small groups, as well as visitors.

## Number of Membership

Series	Membership
Minato Mirai Series	401
Ongaku-Do Series	232
Timeless Masterpiece	92
Select Ticket	519
Number of members:	1,010
(excluding duplicates)	
Corporate members (corporate ticket members)	86

# Topics

## 400th Regular Concert Commemorative Performance

More than half a century after the First concert in October 1970, we reached the milestone of 400th one this term, and Verdi's magnum opus "Requiem" was performed under the direction of music director Ryusuke Numajiri. The sound of prayers echoing in the packed Yokohama Minato Mirai Hall, and all the audience became united when the last sound completely disappeared.



November 16, 2024  
Minato Mirai Series #400

## TV program "Kana Phil Feeeeeel"

TV Kanagawa aired the classic music focused casual variety program "Harunosuke & Melon, Kana Phil Feeeeeel". All BGM and sound effects used in the program were recorded originally by us. (Aired 4 times for the 2024-2025 season and 2 times for the 2025-2026 season)



TV Kanagawa Program "Kana Phil Feeeeeel"



TV Kanagawa Official  
YouTube of the program



## CD release of the opera "Yuzuru"

The CD of the opera "Yuzuru" performed to commemorate the 100th anniversary of the birth of our Laureate Arts Advisor Ikuma Dan has been released. The singing voices of Japan's leading singers and the Yokosuka Arts Theater Boys and Girls Choir under the direction of Music Director Numajiri have been recorded in the best form. You can enjoy the moving opera and the familiar sound of Ikuma Dan.

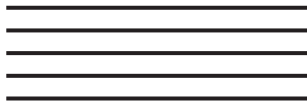


"YUZURU" CD Jacket photo



◀ CD Buying site

## Kanagawa Art Hall



Junior Orchestra  
The original character  
"Kapuchi" < Konda >

The Kanagawa Philharmonic Orchestra serves as the designated manager of the Kanagawa Prefectural Kanagawa Art Hall (referred as the "Art Hall"). In addition, the Kanagawa Philharmonic has been using the Art Hall as a rehearsal venue since its opening. The Art Hall conducts a variety of businesses, and is loved, supported by the local community, and strives to create a lively atmosphere in the region.

The art hall has a hall and five studio facilities, and the hall is popular for its good acoustics and is used for various recitals and hall rehearsal before the performance. The large first studio is used as a place to practice music and dance circles, while the smaller studios are mainly used for individual practice of musical instruments.

Various performances were held as a hall-sponsored project, and many people attended.

In relation to the Kanagawa Philharmonic, we held a "casual concert" where students can easily enjoy classical music, and the "Kanagawa Philharmonic Junior Orchestra" in which Kanagawa Philharmonic members instruct students from the fourth grade of elementary school to the third year of high school, and at the end of the concert they hold a "Accomplishment concert," sending out a total of 311 graduates so far. In addition, the Kanagawa Philharmonic rehearsals are open to the public 50 times a year.

A "DVD Theatre" was held every month to screen movie DVDs in the hall, and at the "Outdoor Concert" in which groups of users appeared, five groups in spring and 7 groups in autumn, and many people enjoyed each



Art Hall seen from the sky

time. In addition, during the two-week "Brass Band Week," 10 brass band enthusiast groups performed.

The Yokohama City "Classic Yokohama" project was held for the first time at the Art Hall under the title of "Prize Concert". The "Music Tamate Bako ~ Vol.4 "Recitation and Music" edition of the "First Concert Project" for elementary school students, the "Child-Rearing Support Project 'Baby Thank You Concert'" for mothers and fathers who are raising children with the keyword "Thank you for being born, thank you for giving birth" and the "Gakuensai Festival" of the "Inclusive Project" were held. In addition, a wide range of projects were held, such as a five-month family photo exhibition of children with disabilities in the exhibition gallery on the second floor.

In addition, the "Kanagawa Philharmonic Orchestra Members Concert Series," which makes use of fibre-optic connection permanently installed in the hall, is live-streamed from time to time, and you can see a different side of the orchestra members who play music that are not played by the orchestra.



# Income and Expenditure Report

## Balance Sheet

[Yen in 1,000]

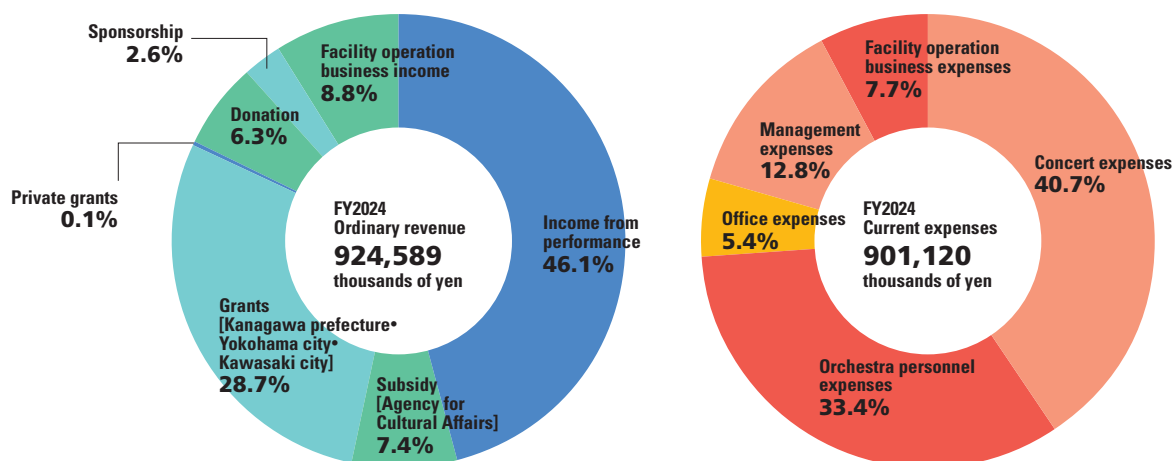
Account	FY2025	FY2024	Increase / Decrease
<b>&lt;Assets&gt;</b>			
Current assets	334,339	334,320	19
Fixed assets	320,047	304,822	15,225
(Assets for basic funds)	11,600	11,600	0
(Restricted assets)	290,108	276,769	13,339
(Other Fixed assets)	18,339	16,453	1,886
<b>Total assets</b>	<b>654,386</b>	<b>639,142</b>	<b>15,244</b>
<b>&lt;Liabilities&gt;</b>			
Current liabilities	110,432	113,199	△ 2,767
Fixed liabilities	27,142	28,497	△ 1,355
<b>Total liabilities</b>	<b>137,574</b>	<b>141,696</b>	<b>△ 4,122</b>
<b>&lt;Net assets&gt;</b>			
Restricted net assets	163,822	166,483	△ 2,661
Unrestricted net assets	352,990	330,963	22,027
<b>Total net assets</b>	<b>516,812</b>	<b>497,446</b>	<b>19,366</b>
<b>Total liabilities and net assets</b>	<b>654,386</b>	<b>639,142</b>	<b>15,244</b>

## Statement of Activities Summary

[Yen in 1,000]

Account	FY2025	FY2024	Increase / Decrease
Income from basic fund	0	0	0
Donation	58,080	56,506	1,574
Grants	334,128	333,750	378
Sponsorship income	23,932	46,193	△ 22,261
Business earnings	426,918	412,285	14,633
Designated management fee revenue	59,502	59,459	43
Usage fee revenue	12,917	9,508	3,409
Other revenue	0	5,021	△ 5,021
Miscellaneous revenues	9,112	7,412	1,700
<b>Total revenues and gains from operating activities</b>	<b>924,589</b>	<b>930,134</b>	<b>△ 5,545</b>
<b>&lt;Expenses&gt;</b>			
Project expenses	885,820	891,994	△ 6,174
Management expenses	15,300	14,833	467
<b>Total expenses and losses from operating activities</b>	<b>901,120</b>	<b>906,827</b>	<b>△ 5,707</b>
<b>Total changes in operating activities for the year</b>	<b>23,469</b>	<b>23,307</b>	<b>162</b>
Total changes in non-operating activities for the year	△ 1,313	4,327	△ 5,640
Income taxes	129	129	0
<b>Total changes in unrestricted net assets</b>	<b>22,027</b>	<b>27,505</b>	<b>△ 5,478</b>
Unrestricted net assets at beginning of year	330,963	303,458	27,505
Unrestricted net assets at end of year	352,990	330,963	22,027
<b>Total changes of restricted net assets for the year</b>	<b>△ 2,661</b>	<b>△ 8,000</b>	<b>5,339</b>
Restricted net assets at beginning of year	166,483	174,483	△ 8,000
Restricted net assets at end of year	163,822	166,483	△ 2,661
<b>Net assets at end of year</b>	<b>516,812</b>	<b>497,446</b>	<b>19,366</b>

## Income and Expenditure





# Kanagawa Philharmonic Orchestra



## Orchestra Members

66 performers As of June 30, 2025

### Music Director

Ryusuke Numajiri

### Special Guest Conductor

Kazuhiro Koizumi

### Honorary Conductor

Shigeo Genda

### Principal

#### Solo Concertmaster

Yasunao Ishida

### Laureate Artistic Advisor

Dan Ikuma

### Laureate Conductor

Kazuo Yamada

### Assistant Conductor

Yuta Kobayashi

### 1st Violin

Rune Aoki / Kayoko Okuyama  
◇Tomoko Goda / Jun Sakurai  
Takako Shibuya / Yukiko Nishihara  
Sachio Nomura / ◇Shoko Hamada  
Mari Matsuo / Yuri Morizono  
Kotone Yokoyama

### 2nd Violin

☆Naoru Komiya / ☆Chisako Naoe  
Chie Arima / Shigeru Omachi  
Kosuke Kume / ◇Satoru Sakurada  
Akari Takebe / Momoko Hayashi  
Yuri Matsukita / ◇Fukiko Matsushita  
Naoko Monma

### Viola

☆Ryo Oshima / ◇Maho Ikebe  
Akiko Kimura / ◇Kyoko Takano  
Miyu Nakajima / Ichizo Yokouchi  
Liu Jing yang

### Cello

☆Shohei Uwamori / Azusa Kuramochi  
Shoko Sakomoto / Kaishi Suzuki  
◇Yuho Takagi / ◇Makito Chonan

### Contrabass

◎Koichi Yonenaga / Milan Kawamura  
Seichi Takamure / ◇Midori Hayashi  
◇Takahiro Matsukuma

### Flute

◎Setsuko Egawa / ◎Kiriko Shimobara  
Shigeki Tsuruoka

### Oboe

◎Marie Koyama / ◎Junko Suzuki  
Namiko Konno

### Clarinet

◎Yusuke Saito / ◎Yuto Kamei  
Yukari Ando

### Bassoon

◎Kazunari Suzuki

### Horn

◎Mika Toyoda / ◎Yuka Bando  
Yu Kumai / Daiki Chiba

### Trumpet

◎Tatsunori Hayashi / □Toru Misawa  
Anju Obata / Ryo Nakamura

### Trombone

◎Yukino Fukawa / Hiroaki Hasegawa

### Bass Trombone

Tsutomu Ikeshiro

### Tuba

Jun Miyanishi

### Timpani & Percussion

◎Shimon Shinozaki / Mari Kanai  
Hisao Horio

☆ Special Contract Principal

◎ Principal

□ Contract Principal

◇ Vorspieler (Vice Principal)

## Officers & Management Staff

As of June 30, 2025

### Officer

#### Chairman

Takashi Ueno

#### Vice Chairman

Takehiko Ueno

#### Senior Executive Director

Ryuichi Sakurai

#### Executive Director

Toru Sakakibara

#### Director

Ichiro Asukata  
Yoshihisa Inoue  
Tetsuro Osaki  
Morihiro Kawamoto  
Goro Kusakabe  
Tadashi Komine  
Masanobu Nakajima  
Yukihiro Nakamura  
Naofumi Nonami  
Kazuyuki Harada  
Atsushi Yanase

### Auditor

Tsutomu Okutsu  
Kaoru Kitao

### Councilor

Tetsuro Adachi  
Oko Arai  
Asako Ishida  
Akira Imai  
Ryuji Era  
Shingo Okamura  
Chikako Kagawa  
Shuji Kaneko  
Masahiko Shimizu  
Yumiko Takayanagi  
Shigeru Nakamura  
Toshikazu Maeda  
Itaru Yukawa

### Honorary Adviser

Yutaka Hirano

### Advisor

Yuji Kuroiwa  
Takeharu Yamanaka  
Norihiko Fukuda  
Hiroshi Ueki  
Tatsuya Kataoka

### Management Staff

#### Director & General manager

Ryuichi Sakurai  
(Concurrently Serving  
as Senior Executive Director)

#### Artistic Administrator

Toru Sakakibara  
(Concurrently serving as Executive Director)

#### Business Promotion Dept.

Yasunori Sawaki (General Manager)

#### Planning & Production group

Daisuke Hayashi  
(Manager • Planning & Production)  
Mei Aoki (Planning & Production)  
Mizuki Kato (Planning & Production)  
Tokiya Uchiyama (Planning & Production)  
Tomoka Akasaka  
(Planning & Production)  
Eiko Uchida (Sales Assistant • Production)  
Etsuko Watanabe  
(Sales Assistant • Production)

#### Marketing Group

Koichiro Taga  
(Manager • Marketing & Public Relations)  
Emi Hashimoto  
(Public Relations Production)

#### Performance Business group

Atsushi Terakado  
(Manager • Stage Manager)  
Kentaro Kyoya  
(Manager • Stage Manager)  
Tamae Yamaji (Librarian)

#### General Affairs & Accounting Department

Hiroshi Sasajima (General Manager)  
Eiko Fujibuchi (Manager)  
Takayo Ogawa (Chief)

#### Patronage

Yasunori Sawaki  
(General Manager • Concurrently serving  
as Business Promotion Dept.)  
Eri Koide  
Yoko Iida

#### Art Hall Management Division

Yoichi Baba (General Manager)  
Takeshi Fukasawa (Manager)  
Yuko Suzuki  
Ichiyo Moriuchi

#### Counselor

Keijiro Kuroda

#### Music Counselor

Koichi Ohashi





KANAGAWA  
PHILHARMONIC  
ORCHESTRA

**Office**



231-0023

25-15 MetLife Yamashitacho Bld.9F

Yamashitacho Naka-ku Yokohama-Shi Kanagawa

Tel. 045-226-5045 (Weekday 10:00-17:00)

Fax. 045-663-9338